



CFS-CT B Hilti Firestop Coated Board

Tested and assessed as per
AS 1530.4 and AS 4072.1

- ✓ Cost effective solution for large openings
- ✓ Strong approval covering your everyday penetration seal



Applications

- Mixed penetrations in flexible and rigid walls and rigid floors
- Electrical trade - Cables, cable bundles, cable trays and cable conduits
- HVAC trade - Non-combustible (metal) and composite pipes with combustible / non-combustible insulation in combination with Firestop Bandage CFS-B
- Plumbing trade – combustible pipe in combination with Firestop Collar CFS-C P or CFS-C EL (under development)
- Sprinkler trade - Non-combustible (metal) pipes (under development)



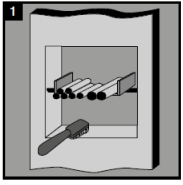
Features

- Ideal for large opening post installed firestop, approved for mixed services
- Full trade coverage, the go to product / solution for post install configurations
- Use with Hilti Firestop coating CFS-CT to achieve 90/90 FRL, use with generic 60 density 25 mm MW wrap to achieve up to 120/120 FRL, for Cable/cable tray penetrations
- Allows local sustained insulation configuration for HVAC services
- High quality product - Easy to cut, edges or coating do not crumble or delaminate as easy
- Pre-coated for immediate use

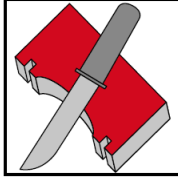
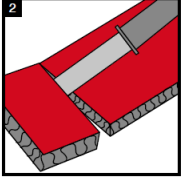
Technical Data (CFS CT B preformed board)

Colour	White
Dimension	1200mm x 600 mm x 50 mm
Base material coverage	Plasterboard Wall Aerated Concrete, Concrete and Masonry Wall Proprietary wall system Concrete Slab
Storage and transport temperature range	-5 – 40 °C
Application temperature range	5 – 40 °C
Temperature resistance range	-40 – 100 °C
Mould and moisture	Class 0 (EN ISO 846)
Re-penetration	Allowed
Complementary products	CP 606, CP 611A, CFS-CT, CFS-B, CFS-C P, CFS-W P, CFS-C EL, CFS-SL GA, CFS-P BA
CFS-CT coating Shelf life	15 months (from manufacturing date)
CFS-CT coating Approx. curing time	1mm/day

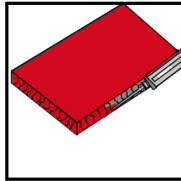
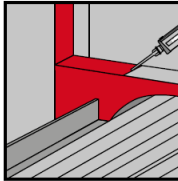
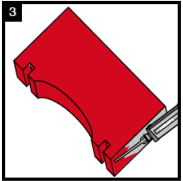
Instructions for use



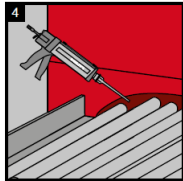
Clean the opening Cables and support structures must be free from dust, grease and oil, installed to local building regulations and electrical standards.



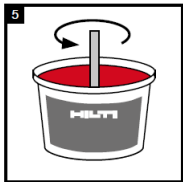
Cut the mineral wool coated batt to the right size. Cut the necessary shapes around the services.



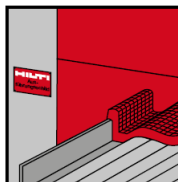
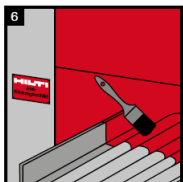
Hilti Firestop batts are pre-coated. If surface has mineral wool revealed, retreaded with Hilti Firestop Coating CFS-CT, min. 1.2mm wet film thickness



Annular gap between services and batts to be filled with specified filler sealant, e.g. CP 606, CP 611A



Mix Hilti Firestop Coating CFS-CT carefully. Coating CFS-CT can be applied with a brush or roller. Fill the gaps and seal the cables.



Additional protection:

when the application requires a dry film thickness of 2 mm, CFS-CT should be applied two layers, apply the second layer only when the first layer is completely hardened when use with mineral wool mat, refer to relevant approval for detailed installation.

APPROVALS

Approval documentation is available upon request.

Hilti Engineering Services

Are you planning your next project?
We are here to help you find the best solution.

Email us at AUTechnicalCentre@hilti.com or call us on 131 292.

