



SOLUTIONS FOR MECHANICAL TRADES.

Hilti Tools, Fastening &
Firestop Systems



THE CLEVER ALTERNATIVE.

We manage your tools so you can manage your business

Hilti Fleet Management

Avoid the hidden costs of owning power tools

Most contractors only think of tools in terms of purchase price. But have you considered the hidden costs associated with owning power tools?

They may be below the surface but they are very real and add up quickly.

With Hilti Fleet Management there is no upfront investment to tool-up for a job. Instead, you pay a fixed monthly charge that covers all tool, service and repair costs. This greatly simplifies your financial planning and takes a load of administrative work off your shoulders.

Here's what some of our Fleet Management customers have to say:

"With Fleet Management you know the tools are going to be there when you need them"

Trent Leen, Director
Bernie Leen & Sons



CONTROL YOUR COSTS

CUT ADMINISTRATION

"Fleet Management gave me more time on site and less worrying about tools"

Norm Touma, Director
Dux Plumbing Services



NO MORE DOWNTIME

"We don't have to worry about (services and repairs). It's effortless"

Richard Tat, National Operations Manager
Aus-Rack Installations



KNOW WHAT YOU HAVE



Contact us to help you optimise your tool fleet

Watch the video to see why professional tradies choose Fleet Management



All inclusive repairs

- No repair costs - ever
- Unlimited battery replacements



Fixed monthly cost

- A low monthly usage fee replaces a large upfront cash investment to tool up
- Predictable costs, every month



Theft coverage

- 80% of losses covered in the event of a theft
- Simply report the tool stolen with a police report. We'll take care of the rest



Streamlined processes

- No more repair quotes – high quality tool repairs returned fast
- Quick and easy order process to add tools to your fleet
- 1 monthly invoice



Tool upgrades

- Use our tools to get the job done, then trade up to the latest technology at the end of the term
- Minimise downtime with a constant fleet of peak performing tools



Loan tools

- In the event of a tool repair we can arrange a loan tool from a designated Kennards Hire branch. Call us on 131 292 and we'll do the rest.



Tool inventory and labelling

- Use Fleet Management Online to track and assign your tools to a specific job, team or worker
- A full tool fleet list helps avoid redundant purchases
- Customised labels makes tracking tools easier

How many tools don't come back after a job?

How many power tools do you have and where are they?

How expensive is it to upgrade your tools to the latest technology?

How often do you repair tools? How much does that cost you?

How often do you lose a tool or have one stolen?

If these questions are a concern for your business, then Hilti Fleet Management may be right for you.

QUICK, EXPERT REPAIRS.

Clear warranties and repair costs

Hilti Tool Service



We repair and clean your Hilti tools quickly and professionally. We'll even pick them up from your jobsite and return them to you onsite as well.

QUICK TURNAROUND

- 1 day in shop to repair tools plus transit times.
- Smooth onsite pick-up and delivery, thanks to our strong partnerships with trusted carriers.
- All repairs are carried out by our highly trained and certified Hilti tool technicians.
- We only use Hilti spare parts.



CLEAR WARRANTIES AND REPAIR COSTS

Up to 2 years no cost repair or replacement:

We repair your Hilti tool for free for up to 2 years after you buy it, if it breaks down. This includes parts worn by wear and tear, free pick-up and delivery. After the end of the 2 year warranty, you pay for repairs, but repair costs are capped.

3 month no cost repair:

We repair your Hilti tool for free for 3 months after your last Hilti repair, if it breaks down again. This includes parts worn by wear and tear, free pick-up and delivery.

All tools are covered by our manufacturer's warranty:

Tools are repaired free or replaced if they break due to materials or manufacturing defects, for as long as spare parts are held.

THE PROCESS IS SIMPLE

If you need to organise a repair, just contact us by phone or online and we'll do the rest.

Every Hilti tool is registered, so you don't even require proof of purchase.

Watch the video to know more about our Tool Service

PRODUCTIVITY PLUS.

Complete systems for mechanical trades

Hilti Systems



SYSTEMS FOR MECHANICAL CONTRACTORS

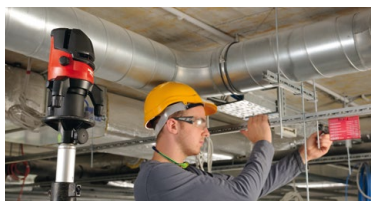
The ability to work quickly and efficiently while achieving high quality, is an essential everyday requirement for specialists in mechanical trades.

Our product range offers a multitude of efficient solutions for measuring and laying out fastening points, drilling anchor holes, making penetrations in walls and ceilings, as well as fastening pipes and ducts of all kinds, to walls, floors and ceilings.

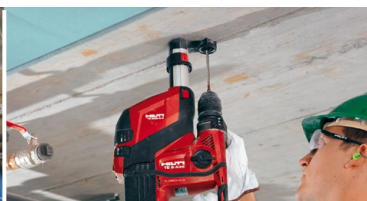
Our mechanical and chemical anchors cover a wide range of applications from light and medium duty through to heavy-duty loads. Our advanced anchoring systems are proven to provide the strongest solution for safety critical applications in concrete and masonry.

We also supply a comprehensive range of firestop products designed to seal off pipes and openings in the event of fire, while our highly effective dust removal systems for power tools make slitting, cutting, drilling and chiselling tasks more efficient, safe and clean.

Our cordless systems for drilling, screw driving and cutting set the standard for maximum mobility combined with the high performance and long battery life you require.



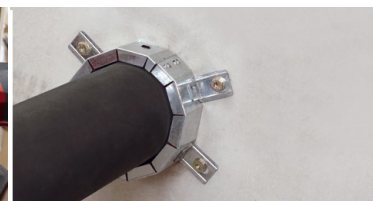
Measure



Open



Fasten



Close

ACCURATE, RELIABLE AND EASY TO USE.

Hilti Measuring
Systems



PD-I range meter

- Laser precision for reliable results and accuracy $\pm 1\text{mm}$
- Makes measuring a one person task, helping you get the job done faster
- Can measure area and volume
- Can add, subtract and do Pythagoras
- Extremely simple to use



[Click here for more info](#)



PM 4-M multi line laser

- Complete solution for all aligning tasks: level, align, plumb and square
- Projects clear 3D vertical lines with a cross on the ceiling
- Perfect for vertical alignment when installing pipes
- Levelling pipe installations



[Click here for more info](#)



PX 10 transpointer

- Position for a penetration
- Find drill bit start/exit point before drilling or coring through walls or floors
- Wall thickness measurement for easy selection of the required drill or core bit length



[Click here for more info](#)



PS 50 multidetector

- Detect and avoid rebar, aluminium, copper, plastic, wood, live wire and pipe in a range of base materials
- Simple - Easy to operate and interpret display
- Reliable - Pulse Power provides accurate object localisation and identification



[Click here for more info](#)



PS 1000 X-Scan

- Easy to use pulse radar detection tool
- Provides real-time internal view of concrete structure for on-site evaluation
- Locate rebar, tendons, metal and plastic conduits, glass fibre cables, voids in dry concrete structures in depths up to 300mm
- Avoid hitting concealed objects, find a safe spot to drill, core and saw



[Click here for more info](#)

Measure

Open

Fasten

Close

THE FREEDOM TO GET THE JOB DONE.

Hilti Cordless
Systems



TE 4-A22 cordless rotary hammer

- Repetitive drilling in all directions in concrete and masonry, recommended diameter range 5-12mm
- First class performance-to-weight ratio
- High battery capacity – more holes per charge
- Hammering mechanism specifically designed for superior drilling performance



[Click here for more info](#)



TE 4-A22 DRS cordless rotary hammer with dust extraction

- Repetitive drilling in all directions in concrete and masonry, recommended diameter range 5-12mm
- Safer work environment with dust-free drilling using the TE DRS 4-A



[Click here for more info](#)



SIW 22-A cordless impact wrench

- Compact design allows easy use in tight corners
- 3 gears and electronic clutch control for easy torque and speed adjustment
- 4 LEDs around the chuck illuminate the work surface
- Electronic speed control trigger and motor brake for precise starting and stopping
- Compact and rugged battery for high performance and long life



[Click here for more info](#)

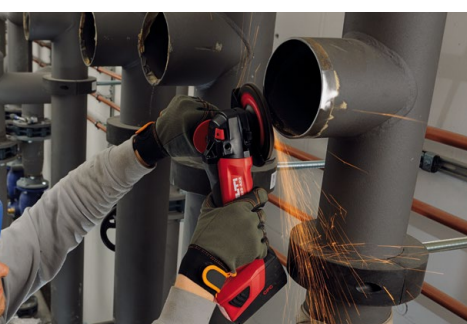


SCM 22-A cordless metal cut circular saw

- Cutting openings in sheet metal in heating and air conditioning installation work
- Weighs just 4kg for best handling and ease of use
- Blade brake stops in 0.5 sec for maximum safety
- Cut channels and pipes quickly and cleanly with no sparks



[Click here for more info](#)



AG 125-A22 cordless angle grinder

- Most powerful grinder on the market, can withstand high forces when cutting or grinding
- Perfect balance and low weight
- First class safety features: disc brake, Active Torque Control (ATC), deadman's switch



[Click here for more info](#)

Measure

Open

Fasten

Close

QUICK, PRECISE AND CLEAN.

Hilti Diamond
Systems



DD 150-U diamond coring system

- Tremendous versatility to core drill wet, dry, on the rig or hand-held, from an all-in-one system
- 3-speed mechanical gearing to match coring diameter for optimal performance
- Rig-based wet drilling for penetrations in concrete for pipes and cables



[Click here for more info](#)



DD-BI LCL diamond core bits

- All segments are laser welded for long-lasting performance
- Segment specifications suits concrete of medium-hard abrasiveness and medium reinforcement concrete
- X-CM diamond X-Change module (from 52mm and larger) lets you re-tip bits on site in minutes with a screwdriver



[Click here for more info](#)



VC 40-U dry/wet vacuum cleaner

- Remove dust and slurry from drilling, slitting, grinding and wet/dry coring
- 1200W powerful motor
- Hilti Airboost filter technology for consistently high suction performance
- Automatic filter cleaning every 15 seconds



[Click here for more info](#)



VC 40-U-Y hybrid vacuum cleaner

- Remove wet and dry dust from drilling, chasing, grinding etc.
- The only hybrid wet/dry (can be used both corded and cordless) vacuum on the market
- 2 charging stations for 14 V, 22 V and 36 V Li-Ion batteries



[Click here for more info](#)

Measure

Open

Fasten

Close

ANCHOR SOLUTIONS BUILT TO CODE.

Hilti Anchor
Systems

NCC COMPLIANCE

To ensure you comply with the National Construction Code (NCC), ask for the ETA documentation for the selected anchor.



STRONGEST ANCHORS

Our anchors are proven to provide the strongest solution for safety critical applications in concrete, fully backed by technical documentation, software and engineering services.

WIDEST RANGE

We offer a full suite of ETA assessed anchoring solutions, to suit every application from basic through to the most complex and challenging.



SAFEset FAST, RELIABLE AND SAFE

- Auto-cleaning with Hilti hollow drill bit
- Dustless
- NCC compliant and ETA approvals for the following products:

- Roughen diamond cored holes for better bonding
- Allows higher loads
- NCC compliant and ETA approved for RE 500 V3



HOT DIPPED GALVANISED

Hilti provides NCC compliant mechanical anchor portfolio in hot dipped galvanised.

Hilti HDG anchors with ETA approval:



TORQUE BAR

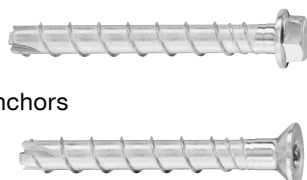
This unique setting tool is fast, safe and ETA approved.



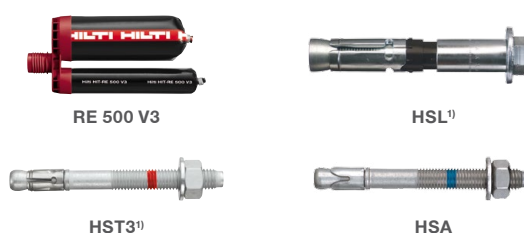
SCREW ANCHORS HUS3

Reliable and ETA approved for numerous permanent applications.

- Fast
- No torque wrench
- High loads like stud anchors
- Adjustable
- Cuts through rebar



ETA APPROVED FOR DIAMOND CORED HOLES



1) Cored with Hilti DD EC-1 tool

Measure

Open

Fasten

Close

STRONGEST ANCHORS, WIDEST APPROVALS.

Hilti Chemical
Anchor Systems



HIT-RE 500 V3 ultimate epoxy mortar

- Fastest slow cure (7hrs @ 20°)
- C1 and C2 ETA seismic approvals
- Suitable for use in cracked and uncracked concrete
- Use SAFEset hollow drill bits for dustless, auto-cleaning hole drilling



[Click here for more info](#)



HIT-RE 100 everyday epoxy mortar

- Suitable for use in cracked and uncracked concrete
- Can be used indoors and outdoors in all conditions
- Long working time allows for greater flexibility during installation



[Click here for more info](#)

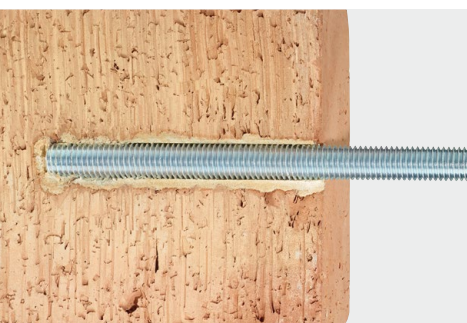


HIT-HY 200 ultimate hybrid mortar

- Fast cure hybrid mortar (60 mins @ 20°)
- C1 and C2 ETA seismic approvals
- Suitable for use in cracked and uncracked concrete
- Use SAFEset hollow drill bits for dustless, auto-cleaning hole drilling



[Click here for more info](#)



HIT-HY 270 ultimate hybrid mortar (masonry)

- Strong and reliable fastening in a variety of masonry base materials
- Ideal in refurbishment and renovation applications
- Use with HIT-SC composite sleeve in hollow base materials



[Click here for more info](#)



Manual and battery dispenser systems

- HDM 330 / 500: Manual dispensing with minimal dripping and almost no wastage
- HDE 500-A22: Battery dispensing for effortless powered dispensing and minimal wastage



[Click here for more info](#)

Measure

Open

Fasten

Close

RELIABLE AND EASY INSTALLATION.

Hilti Mechanical
Anchor Systems



HKD drop-in anchor (M10 x 30)

- Flared end for accurate flush setting
- Perfect for hanging pipe, cable and ventilation systems



[Click here for more info](#)

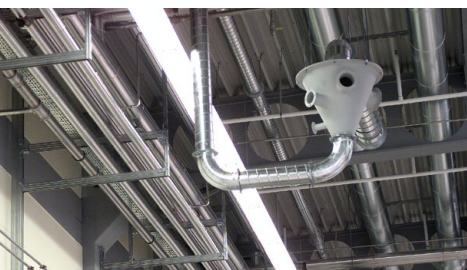


HKD 'short' drop-in anchors

- Shallow depth (25mm) drilling for M6, M8, M10, M12, avoids rebar strikes
- Fast installation time with unique setting tool – 50% faster than using a hammer and punch
- Drill with rotary hammer, remove bit and set with piston



[Click here for more info](#)

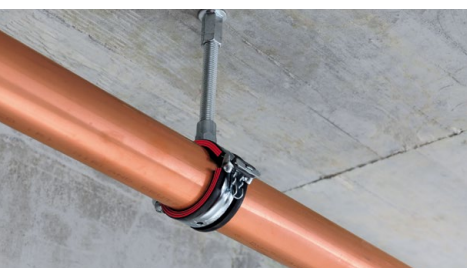


HUS3-H 6 screw anchor (hex head)

- Integrated washer
- Easily removable
- Productivity gain due to installation speed and effortless setting
- Used for channels and large scale repetitive fastenings



[Click here for more info](#)



HUS3-I 6 screw anchor (internal thread)

- Less drilling and convenient overhead solution
- Significant time saving versus traditional anchor methods
- Great for various piping and ventilation applications



[Click here for more info](#)



HUS3-P 6 screw anchor (pan head)

- Significant time saving on total installation time versus traditional methods
- Less drilling and convenient overhead installation
- Adjustable new channel system elements due to flat head configuration



[Click here for more info](#)



HST3 expansion anchor

- Tolerates high loads and small edge distance with 3 embedment depths
- Fast hammering and reliable/convenient torqueing possible with the Hilti system solution



[Click here for more info](#)

Measure

Open

Fasten

Close

MAXIMISE YOUR PRODUCTIVITY.

Hilti Powder-Driven Fastening Systems

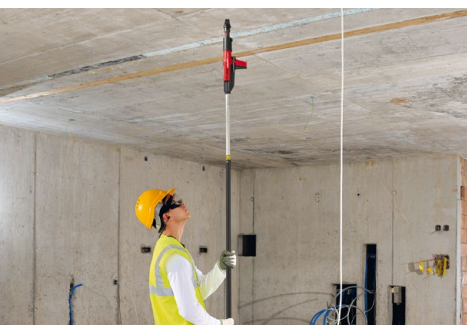


DX 351 ME powder-actuated tool

- Fastening of threaded rod hangers, ceiling clips and other fasteners
- Fully automatic system
- Light and compact
- Versatile: specific fasteners available for each application



[Click here for more info](#)

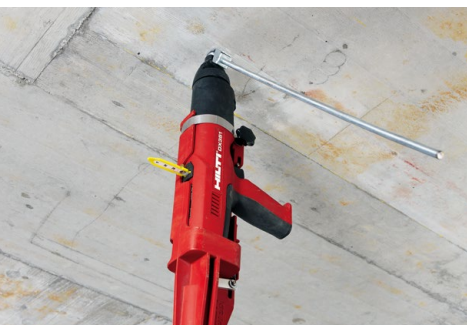


DX 351-CT fastening pole tool

- Fastening of threaded rod hangers and ceiling clips to concrete or composite deck for hanging mechanical services
- Specialised ceiling tool, do away with the need for ladders and simply install fixtures from a standing position



[Click here for more info](#)



DX cartridges

- Different power charges combined with the power regulation wheel on the tool ensure fasteners are driven optimally for consistently high fastening quality
- The right power cartridge ensures less failures, increasing worker productivity



[Click here for more info](#)

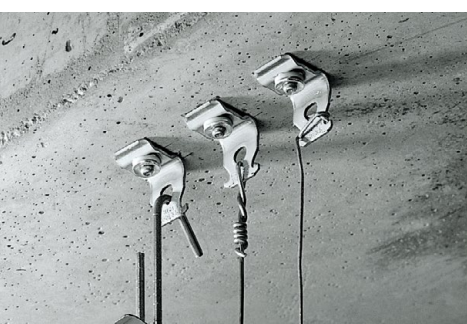


X-HS threaded hanger for concrete

- Quick fastening to steel and concrete
- Threaded rod can be pre-fitted
- Install suspended components e.g. ceiling frames or pipes
- Fastening installation channels on roof beams or ceilings



[Click here for more info](#)



X-CC-U ceiling clip for concrete

- High performance ceiling clip
- Perfect for bracing
- Loads up to 20kg per fastening point
- Pre-drilling with DX-Kwik can achieve loads of 90kg



[Click here for more info](#)

Measure

Open

Fasten

Close

EFFICIENT AND PRODUCTIVE.

Hilti Gas-Driven Fastening Systems



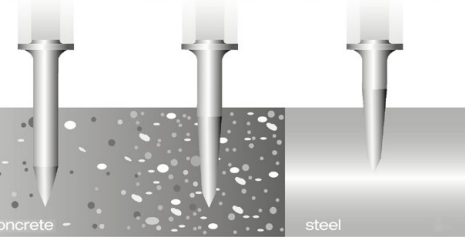
GX 120-ME gas system

- Fastening to concrete, plastered masonry, sand-lime block, concrete block and steel
- Gas gauge indicates how much gas is left
- Nail magazine holds 20 nails for greater efficiency and productivity
- No charging required



[Click here for more info](#)

X-GN X-GHP X-EGN



Gas can and nails system

- Gas nails for all base materials

X-GN: Suitable for concrete, block and sand-lime stone

X-GHP: Suitable for hard concrete

X-EGN: Suitable for steel

GC 21: Gas can, drives maximum 750 fasteners



[Click here for more info](#)



X-UCT multi-directional cable holder

- Tough polyamide material suitable for attaching PE-X pipe types
- Wide opening suitable for cable ties
- Friction fit in the nose of gas tools for easy handling

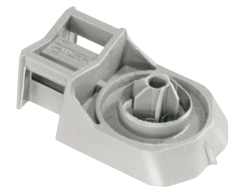


[Click here for more info](#)



X-ECT cable tie fastener

- Fastening PE-X and other plastic pipe types
- Cost efficient method
- Friction fit in the nose of gas tools for easy handling
- Ideal universal holder of cable ties with a width of up to 9mm



[Click here for more info](#)



X-EKSC pipe clip

- Simple and clean fastening solution for metric pipes, can be used singly or neatly clipped together
- Simple and fast attachment of lightweight PE-X and other plastic pipe types to walls and ceilings



[Click here for more info](#)

Measure

Open

Fasten

Close

RELIABLE AND CONSISTENT.

Hilti Battery-Driven Fastening Systems



BX 3-ME battery powered fastening tool

- Fastening plastic pipes to concrete, plastered masonry, filled block and steel
- Drives 600 nails on a single charge
- Uses 22 volt, 5.2 Ah battery, compatible with all Hilti 22 volt cordless tools

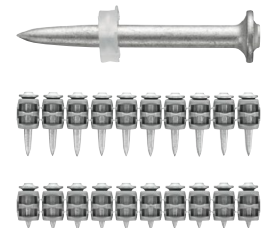


[Click here for more info](#)



BX nail system

- X-P B3 MX: Ballistic point, collated nails for concrete
- X-S B3 MX: Ballistic point, hardened collated nails for steel
- X-P B3 P7: Ballistic point, single nails for concrete



[Click here for more info](#)



X-PT B3 pole tool accessory for overhead fastening

- Safe overhead fastening without a ladder
- Cradle securely clamps the tool
- Extensions available to allow up to 7 foot reach



[Click here for more info](#)



X-UCT multi-directional holder

- Tough polyamide material suitable for attaching PE-X pipe types
- Wide opening suitable for cable ties
- Friction fit in the nose of gas or battery-driven fastening tools for easy handling



[Click here for more info](#)



X-EKSC closed clips for pipes

- Simple and clean fastening solution for metric PE-X and other plastic pipe types, can be used singly or neatly clipped together
- Friction fit in the nose of powder, battery or gas-driven fastening tools for easy handling



[Click here for more info](#)

Measure

Open

Fasten

Close

DONE ONCE. DONE RIGHT.

Hilti Firestop
Systems

VISIT WWW.HILTI.COM.AU OR CALL 131 292 FOR FIRESTOP APPROVAL DOCUMENTATION



CP 680N/S firestop collar

- Cast-in installation
- Sealing pipes from 32mm up to 170mm in diameter
- Suitable for PVC, PP, PP-R and HDPE
- For floor waste fix additional CP680N-RAD device



[Click here for more info](#)



CFS-C P firestop collar

- For retro-fitting applications
- Quick and easy installation
- Allows for correct installation in tight areas
- For use in concrete, masonry, and drywall



[Click here for more info](#)



CP 611A intumescent firestop mastic

- High expansion firestop mastic
- Sealing around various pipe types and applications
- For use in concrete, gas concrete, masonry and drywall



[Click here for more info](#)

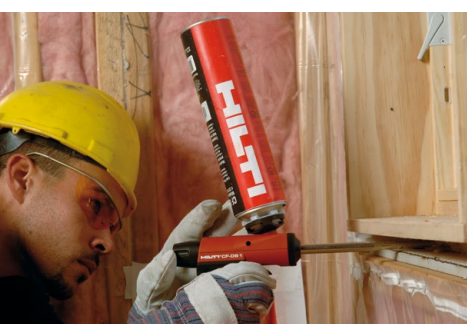


CP 606 fire resistant joint filler

- Acrylic based firestop sealant
- Sealing metal pipe penetrations with low movement
- Fire and acoustic rated
- Impervious to smoke, gas and water



[Click here for more info](#)



CF 126 dispenser foam

- Refrigeration systems and cool rooms
- High yield
- Stop and go controlled dispensing
- Use with CF DS-1 dispenser gun and CFR1 cleaner



[Click here for more info](#)

Measure

Open

Fasten

Close

HILTI ORDERING INFORMATION

MEASURING, ALIGNING AND DETECTION SOLUTIONS

Ordering designation		Item number
Alignment		
Laser range meter PD 5		2004788
Laser range meter PD-I	①	2061407
Laser range meter PD-E		2062050
Green line laser PM 2-LG	②	2098522
Multi line laser PM 4-M	③	2047073
Detection		
Transpointer PX 10		273124
Multidetector PS 50	①	2075559
X-Scan system PS 1000 + monitor		2007503
X-Scan scanner PS 1000		2007501



CORDLESS DRILLING, CUTTING AND GRINDING SOLUTIONS

Drill/Drivers, Impact Drivers, Rotary Hammers 22 volt and 36 volt kits		
Impact driver SID 22-A + 2 x 5.2Ah batteries + charger kit	①	3542544
Impact wrench SIW 22-A + 2 x 5.2Ah batteries + charger kit		3542545
Hammer drill/driver SFH 22-A + 2 x 5.2Ah batteries + charger kit		3542549
Rotary hammer TE4-A22 + 2 x 5.2Ah batteries + charger kit	②	3542555
Dust extraction hood TE DRS 4-A	③	2098484
Rotary hammer TE 6-A36-AVR + dust removal system + 2 x 3.0Ah batteries + charger kit		3511038
Cordless combihammer TE 30-A36 + 2 x 6.0Ah batteries + charger kit		3509856
Cutting and Grinding 22 volt kits		
Circular saw SCM 22-A + 2 x 5.2Ah batteries + charger kit	①	3542557
Angle grinder AG 125-A22 + 2 x 5.2Ah batteries + charger + 25 discs kit		3542562



DRILL BITS

Premium bits		
Hammer drill bit TE-CX 6/12 MP8		2021997
Hammer drill bit TE-CX 8/17 MP8		2022003
Hammer drill bit TE-CX 10/17 MP8		2022008



DIAMOND DRILLING SOLUTIONS

Vacuum cleaners		
Universal vacuum cleaner VC 40-U	①	2114601
Universal hybrid vacuum cleaner VC 40-U-Y + 2 x 36 V 6.0 Ah batteries + accessories kit		3511469
Core rigs		
Diamond coring tool DD 150-U		433327
Diamond coring tool DD 150-U + drill stand DD-ST kit	①	3531116
Core bits (430mm)		
Diamond core bit DD BI 52/430 LCL		2098526
Diamond core bit DD BI 62/430 LCL		2098528
Diamond core bit DD BI 67/430 LCL		2098529
Diamond core bit DD BI 77/430 LCL		2098771
Diamond core bit DD BI 102/430 LCL		2098775
Diamond core bit DD BI 122/430 LCL		2098777
Diamond core bit DD BI 132/430 LCL		2098778
Diamond core bit DD BI 162/430 LCL		2098781



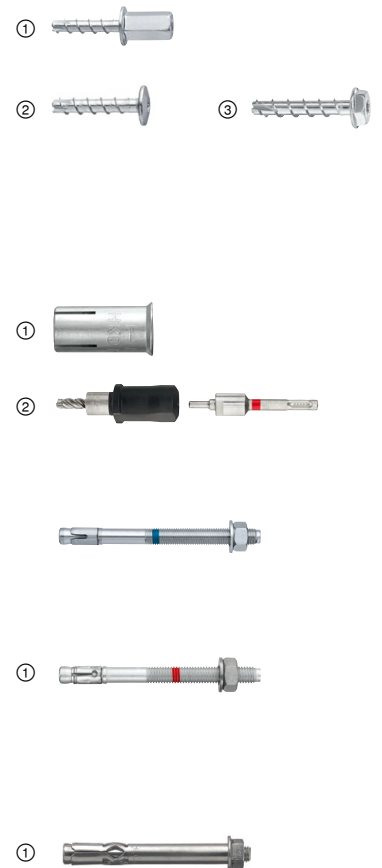
DIRECT FASTENING SOLUTIONS

Ordering designation		Item number
Powder-actuated		
Powder-actuated tool with magazine DX 351 MX	①	333033
Powder-actuated pole tool DX 351-CT kit	②	3457798
Yellow cartridge 6,8/11 M		50352
Ceiling clip X-CC CS27 P8 (100)		2005065
Ceiling clip X-CC27 C27 P8 (1000)		289964
Ceiling clip X-CC U27 P8		386230
Ceiling hanger X-HS M10 U32 P8 S15	③	361790
Gas-actuated		
Gas-actuated tool GX 120-ME	①	274898
GX 120 7ft pole		3465694
GX 120 5ft pole		3465695
Kit X-GHP 18 MX + GC 21 (750 nails + gas can)		226931
Kit X-GHP 20 MX + GC 21 (750 nails + gas can)		226932
Universal cable tie holder X-UCT MX	②	2095183
Cable tie holder X-ECT MX		285709
Cable tie with holder X-ECT 40 MX		432947
Ceiling clip X-ECC MX		228342
Electrical cable clamp X-EKSC 16 MX		274083
Electrical cable clamp X-EKSC 20 MX	③	274086
Cable clasp X-EKB 16 MX		285714
Battery-actuated		
Battery powered fastening tool BX 3-ME + 2 x 5.2Ah batteries + charger kit	①	3542837
5ft pole BX 3-ME		3542838
7ft pole BX 3-ME		3542839
Universal nail X-P 20 B3 MX		2105404
Steel nail X-S 14 B3 MX	②	2105402
Universal nail X-P 36 B3 P7		2105407



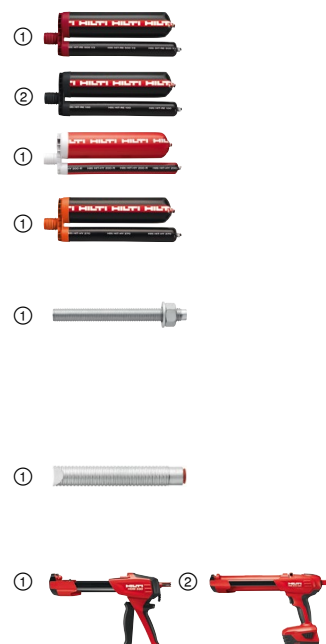
MECHANICAL ANCHOR SOLUTIONS

HUS3 screw anchor systems		
Screw anchor HUS3-I 6x35 M8/M10	①	416740
Screw anchor HUS3-A 6x35 M8/16		416741
Screw anchor HUS3-P 6x40/5	②	416745
Screw anchor HUS3-H 6x40/5	③	416735
HUS screw anchors for seismic applications		
Screw anchor HUS3-I 6x55 M8/M10		423180
Screw anchor HUS3-A 6x55 M10/21		416744
Impact socket S-NSD 1/2"-15 L		408417
Hammer drill bit TE-CX 6/17 MP8		2021998
HKD knock in anchor system		
Flush anchor HKD M10x25 bucket	①	2037454
Flush anchor HKD M12x25 bucket		378432
Setting tool HKD-TE-CX M10x25	②	414480
Setting tool HKD-TE-CX M12x25		2097386
HSA stud anchor system		
Std stud anchor HSA M6x65 20/10/-		2036085
Std stud anchor HSA M6x100 55/45/25		2036087
Std stud anchor HSA M12x85 5/-/-		2004154
Std stud anchor HSA M12x100 20/5/-		2004155
HST3 stud anchor system for seismic applications		
Safety stud anchor HST3 M8x75 -/10		2105888
Safety stud anchor HST3 M8x115 -/50	①	2105890
Safety stud anchor HST3 M10x70 10/-		2113974
Safety stud anchor HST3 M10x100 40/20		2105713
Safety stud anchor HST3 M12x85 10/-		2113978
Safety stud anchor HST3 M16x135 35/15		2105858
Light duty mechanical anchors		
Sleeve anchor HLC 10x50/15 bucket	①	385821
Sleeve anchor HLC 12x55/15 bucket		385826



CHEMICAL ANCHOR SOLUTIONS

Ordering designation	Item number
Slow cure epoxy for concrete	
Ultimate performance epoxy mortar HIT-RE 500 V3 (500 ml)	① 2123406
Standard epoxy mortar HIT-RE 100 (500 ml)	② 2123386
Fast cure hybrid mortar for concrete	
Ultimate performance hybrid mortar HIT-HY 200-R (500 ml)	① 2045032
Hybrid mortar for masonry	
Ultimate performance hybrid mortar for masonry HIT-HY 270 (500 ml)	① 2095983
External threaded rods	
Anchor rod HIT-V-F-5.8 M10x95	409551
Anchor rod HIT-V-F-5.8 M12x110	① 409555
Anchor rod HIT-V-F-5.8 M16x150	409560
Anchor rod HIT-V-F-5.8 M20x180	409564
Internal threaded rods	
Int. threaded sleeve HIS-N M10x110	258016
Int. threaded sleeve HIS-N M12x125	① 258017
Int. threaded sleeve HIS-N M16x170	258018
Dispensers	
Manual dispenser HDM 500 toolbox kit (incl. pump, brushes)	① 3497417
Battery dispenser HDE 500 kit + 1 x 2.6Ah battery (incl. cartridges, pump, brushes)	② 3555313



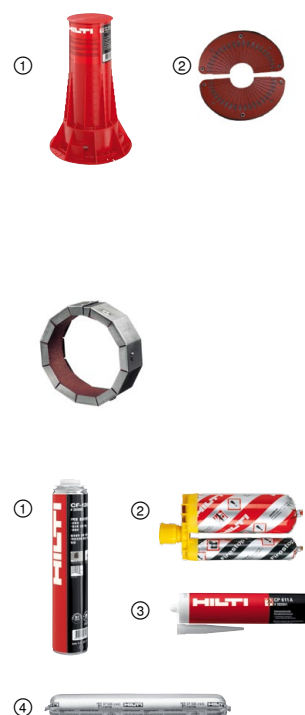
CAST-IN ANCHOR SYSTEMS FOR ELEVATORS

Anchor channel	
Anchor channel HAC-40 91/200 F	431906
Anchor channel HAC-40 91/300 F	431908
Anchor channel HAC-40 91/550 F	431911
Anchor channel HAC-40 91/1050 F	431913
Anchor channel HAC-40 91/1550 F	431905
Anchor channel HAC-40 91/1300 F	431914
Anchor channel HAC-40 91/2050F	2014824
T-head bolts	
T-head bolt HBC-C M12x40 8.8F	434401
T-head bolt HBC-C M16x50 8.8F	434404
T-head bolt HBC-C M16x100 8.8F	434407



FIRESTOP AND CHEMICAL SOLUTIONS

Cast-in collars	
Cast-in device CP 680-75/2.5" N int	① 282694
CP 680 75/2.5" N-RAD retrofit addition	3424903
Cast-in device CP 680 110/4" S	273341
CP 680 110/4" N-RAD retrofit addition	② 3413068
Cast-in device CP 680-160/6" N int	282696
Retro-fit collars	
Firestop collar CFS-C P 50/1.5"	435406
Firestop collar CFS-C P 63/2"	435407
Firestop collar CFS-C P 75/2.5"	435408
Firestop collar CFS-C P 90/3"	435409
Firestop collar CFS-C P 110/4"	435410
Firestop collar CFS-C P 125/5"	435411
Firestop collar CFS-C P 160/6"	435412
Foams, sealant and joint filler	
Dispenser foam CF 126 750ML	① 220439
Dispenser gun CF DS-1	259768
Filling foam CF 116-45 750ML	308968
Finger adapter CF-FA1	259766
Firestop foam CFS-F FX	② 429802
Firestop sealant CP 611A INT	③ 220351
FS joint filler CP 606 580ml INT grey	④ 209633



PROFESSIONAL ASSISTANCE.

Helps make every project a success

Hilti Engineering Services



HILTI SERVICE SUPPORT POLICY

The availability of professional technical support is just as important to Hilti as the production of quality tools. Our team of Field Engineers provide expert technical support, on site or by telephone. We know that every day on the job site brings a new challenge and that's why Hilti Engineers are on-hand to consult on a wide range of technical solutions.



PROJECT SUPPORT

Hilti project managers and engineers assist by coordinating logistics and technical support for defined projects.

ON-SITE TECHNICAL CONSULTING

Our engineers provide on-site support at any location. They offer a consulting service for engineers and construction professionals on specific application needs. Training and site-testing is also a service we can offer.

TECHNICAL SOFTWARE AND DOCUMENTS

Our innovative and practical software solutions cover everything from anchor design and selection, to installation concepts, and are available to support you in your daily work. Technical documents such as approvals, test certificates and technical data sheets can be viewed and downloaded from Hilti Online at www.hilti.com.au/downloads

CONTACT US

For any of these services you can contact us on **131 292** or serviceaustralia@hilti.com

AVAILABLE AS YOU NEED.

How to get in touch

Contacting Hilti

CUSTOMER SERVICE

Customer Service representatives are available Monday to Friday from 7:30am to 5:00pm. Our professionally trained team can help you with product advice, orders and deliveries, as well as organising on-site product demonstrations.

Call: 131 292 Fax: 1300 135 042 Email: serviceaustralia@hilti.com

HILTI STORES

With outlets located nationally, Hilti Stores are much more than display or sales points for Hilti products. At a Hilti Store, you can receive professional advice on products and applications. You can also have hands-on demonstrations of Hilti products. Take a look at our list of Hilti Stores for a location near you.

Visit: www.hilti.com.au

HILTI ONLINE

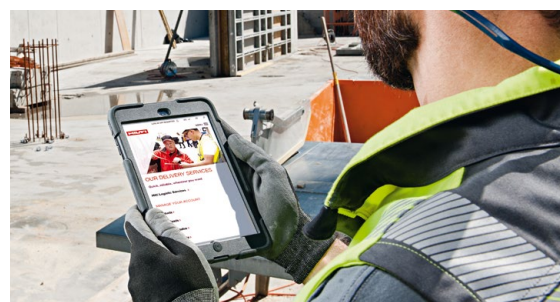
7 days a week, 24 hours a day. Use the website at your own convenience during and after office hours, with quick access to product information and pricing. Register to order online, review your order history, see your tool list and more. Take advantage of our free delivery for online ordering today!

Visit: www.hilti.com.au

ACCOUNT MANAGERS

Professionally trained Account Managers are readily available nationwide, to visit your place of work, where and when you want. By arranging a visit to you, they can help evaluate your job requirements and suggest ways to increase your productivity and profitability.

Call: 131 292



Sydney – Lidcombe
35 Parramatta Road,
Lidcombe NSW 2141
Mon – Fri 7.00am – 5.00pm

Sydney – Alexandria **NEW**
154 Bourke Road,
Alexandria NSW 2015
Mon – Fri 7.00am – 5.00pm

Sydney – Annandale
245a Parramatta Road,
Annandale NSW 2038
Mon – Fri 7.00am – 4.00pm

Newcastle
70-72 Orlando Road,
Lambton NSW 2299
Mon – Fri 7.00am – 4.00pm

Melbourne
203-205 Normanby Road,
South Melbourne VIC 3205
Mon – Fri 7.00am – 5.00pm

Brisbane
718 Kingsford Smith Drive,
Hamilton QLD 4007
Mon – Fri 7.00am – 5.00pm

Gold Coast
Unit 5/46-50 Spencer Road,
Nerang QLD 4211
Mon – Fri 7.00am – 4.00pm

Townsville
Unit 8/264 Woolcock Street,
Currajong QLD 4812
Mon – Fri 7.30am – 4.30pm

Cairns
29 Hannam Street,
Cairns QLD 4870
Mon – Fri 7.30am – 4.30pm

Adelaide
52 Richmond Road,
Keswick SA 5035
Mon – Fri 7.00am – 5.00pm

Perth
150 Abernethy Road
Belmont WA 6104
Mon – Fri 7.00am – 5.00pm

Darwin
32 Benison Road,
Winnellie NT 0820
Mon – Fri 7.30am – 4.30pm

Hobart
56a Hopkins Street,
Moonah TAS 7009
Mon – Fri 7.30am – 4.30pm



Hilti (Aust.) Pty Ltd
Level 5, 1G Homebush Bay Drive
Rhodes NSW 2138

P 131 292
F 1300 135 042
www.hilti.com.au

